

# MI-BOX

Portable Storage Business Opportunity

MI-BOX Container Specs

8 ft.



## SPECIFICATIONS

- ❖ 7'-3-1/2" wide X 7-10" high X 8'-1-1/2" long
- ❖ Empty weight: 1,100 lbs.
- ❖ Forklift tubes 6" x 3" - 33" OC
- ❖ Integrated receivers for wheels
- ❖ Integrated tubes for D-Rings
- ❖ Composite wall panels
- ❖ Recessed threshold
- ❖ 3/4" flooring over 20" on center I beams
- ❖ One piece sealed and riveted aluminum roof
- ❖ Full width roll up door or swing doors optional
- ❖ Stackable 3 high fully loaded
- ❖ Payload capacity @7,500 lbs.
- ❖ Galvanized steel frames

## OPTIONS

- ❖ Galvanized Steel Finish
- ❖ Roll Door
- ❖ Wheel Inserts
- ❖ MIBOX Decals

## PRICING

- ❖ Galvanized Steel Finish \$3,425
- ❖ Roll Door Included
- ❖ Wheel Inserts Included
- ❖ MIBOX Decals Included
- ❖ 42 of our 8 ft. containers can ship on one flatbed semi

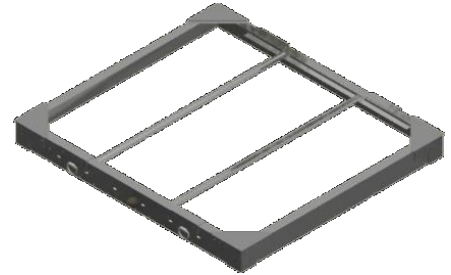
# MI-BOX

## MI-BOX Container Specs

**8 ft.**

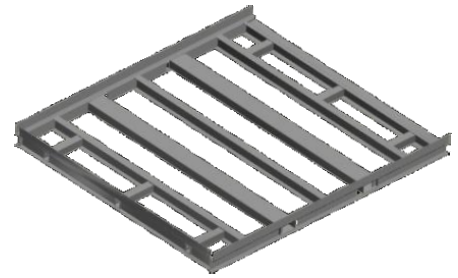
### Roof Structure

- 4 Custom formed angles \*7-1/2" X 3" \*10 gauge
- 2 Tie down angles
- 4 Custom corner roof gussets
- 2 Roof bows @ 24" centers
- 4 Forged d-rings
- Pre-punched perimeter alignment holes for wall panels



### Floor Structure

- 3 Custom formed base rails \* 10 gauge
- 2 Custom formed C-Channel \* 10 gauge
- 4 I Beams \* 2-1/4" X 4" X 1/8"
- 2 lifting tubes \* 6" X 3" X 1/8"
- 4 (wheel) receiver tubes \* 2-1/2" X 2-1/2" X 3/16"
- 2 D- Rings tubes \* 2-1/2" X 2-1/2" X 3/16
- Pre-punched perimeter alignment holes for wall panels



### Wall Section

- Custom formed corner posts \*10 gauge
- Pre-punched alignment holes to attach to base & wall panels

### Composite Wall Panels

- Panels are composed of two, coil-coated metal skins laminated between a low-density, polyethylene core
- Lightweight. Durable. Flexible

