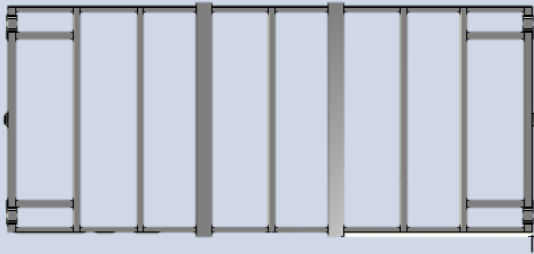


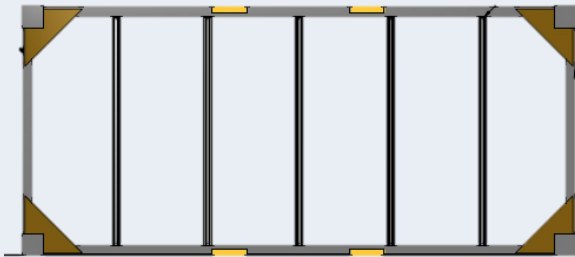
## 16' MI-BOX CONTAINER

7'2" wide X 8'-4" high X 16' long



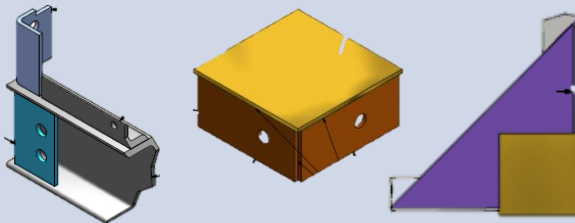
### Floor Structure

- 2 angles – 3" X 2" X 3/16"
- 2 end tubes – 4" X 3" X 1/8"
- 5 I Beams – 2-1/4" X 4" X 1/8"
- 2 lifting tubes – 6" X 3" X 1/8"
- 4 receiver tubes - 2-1/2" X 2-1/2" X 3/16"
- 2 D- Rings @ 10,000 lbs.



### Roof Structure

- 3" X 3" X 3/16" perimeter angles
- 4 – custom roof gussets 3/16"
- 5 - roof bows @ 32" centers
- Pre-punched perimeter holes for wall panels.



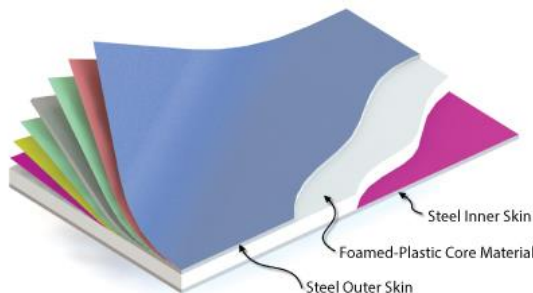
### Wall Section

- Custom formed lower rail / 10 gauge  
Pre-punched alignment holes to attach to base.

### Roof Section

- Custom corner brackets
- Custom formed gussets

- Polyester Baked-on Paint
- Rust Inhibiting Baked-on Primer
- Zinc Coating: G-90 Hot-Dip
- 80,000-psi Yield Full-Hard Steel
- Proprietary Primer Coating
- Adhesive Film
- Foamed-Plastic Core Material



## Composite Wall Panels