

MI-BOX

← Mobile Storage & Moving →

8 ft.



SPECIFICATIONS

- 7'-3 1/2" wide X 7'-10" high X 8'-11 1/2" long
- Empty weight: 1,100 lbs.
- Forklift tubes 6" x 3" - 33" OC
- Integrated receivers for wheels
- Integrated tubes for D-Rings
- Composite wall panels
- Recessed threshold
- 3/4" flooring over 20" on center I-Beams
- One piece sealed and riveted aluminum roof
- Full width roll up door
- Stackable 3-high fully loaded
- Payload capacity: 7,500 lbs.
- Galvanized steel frames

Galvanized Steel Finish \$3,930

Roll Door **Included!**

Wheel Inserts **Included!**

MI-BOX Decals **Included!**

8 ft. storage and moving containers are great for dorm rooms, seasonal items or to clear a garage.

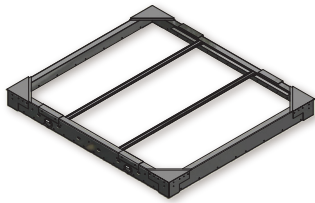
GetMIBOXSYSTEM.com

MI-BOX Mobile Storage leads the moving and storage industry in customer satisfaction, equipment and service. Our dealership opportunities are designed to provide everything needed to run and operate your own successful portable storage and moving business.

8 ft.

ROOF STRUCTURE

- 4 Custom formed angles, 7½" X 3", 10 gauge
- 2 Tie-down angles
- 4 Custom corner roof gussets
- 2 Roof bows with 24" centers
- 4 Forged D-Rings
- Pre-punched perimeter alignment holes for wall panels



FLOOR STRUCTURE

- 3 Custom formed base rails, 10 gauge
- 2 Custom formed C-Channels, 10 gauge
- 4 I-Beams, 2¼" X 4" X ⅛"
- 2 Lifting tubes, 6" X 3" X ⅛"
- 4 (wheel) Receiver tubes, 2½" X 2½" X ⅜"
- 2 D-Ring tubes, 2½" X 2½" X ⅜"
- Pre-punched perimeter alignment holes for wall panels



WALL SECTION

- Custom formed corner posts, 10 gauge
- Pre-punched alignment holes to attach to base and wall panels
- **Composite Wall Panels** are composed of two coil-coated metal skins laminated between a low-density, polyethylene core
- Lightweight, Durable, Flexible



42 of our 8 ft. containers can ship on one flatbed semi!



GetMIBOXSYSTEM.com